



Evolve3-FMS

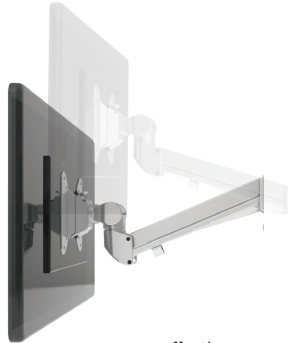
Triple fixed + motion + slider monitor arm

Evolve3-FMS

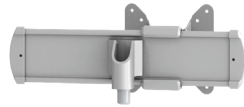
Triple fixed + motion + slider monitor arm



esi



effortless adjustment



slider



cable management



landscape/portrait rotation



grommet mount



desk clamp



integrated allen key storage



VESA quick release

Product specs

- Finger touch dynamic height adjustment
- Recommended for worksurfaces 30.0" deep or less
- 31.4" outside arm extension
- 8.0" center arm extension
- 6.7" arm retraction
- +80°/-60° monitor tilt (*slider mount*)
- +90°/-25° monitor tilt (*center mount*)
- ±90° VESA rotation
- Up to 20.0 lb. weight capacity (*center arm*)
4.4 lb.-15.4 lb. weight capacity (*per outside arm*)
- 18.0" pole height (*includes base*)
- VESA 75mm/100mm quick release
- 180° lock-out feature
- Desk clamp and grommet mount included
- 24.5" max. monitor width
Bezel measured left to right.
Max. width is contingent on weight capacity.
- Slider provides 8.5" of additional horizontal adjustability
- Patented slider design for exclusive ESI use
- Meets or exceeds BIFMA x5.5 and CSA CAN/CGSB44.227 guidelines
- Warranty: 15 yr.



Model

- EVOLVE3-FMS-SLV
- EVOLVE3-FMS-BLK
- EVOLVE3-FMS-WHT

Evolve monitor arm key

- F - Fixed monitor arm
- M - Motion monitor arm
- S - Slider mount

Evolve for every need

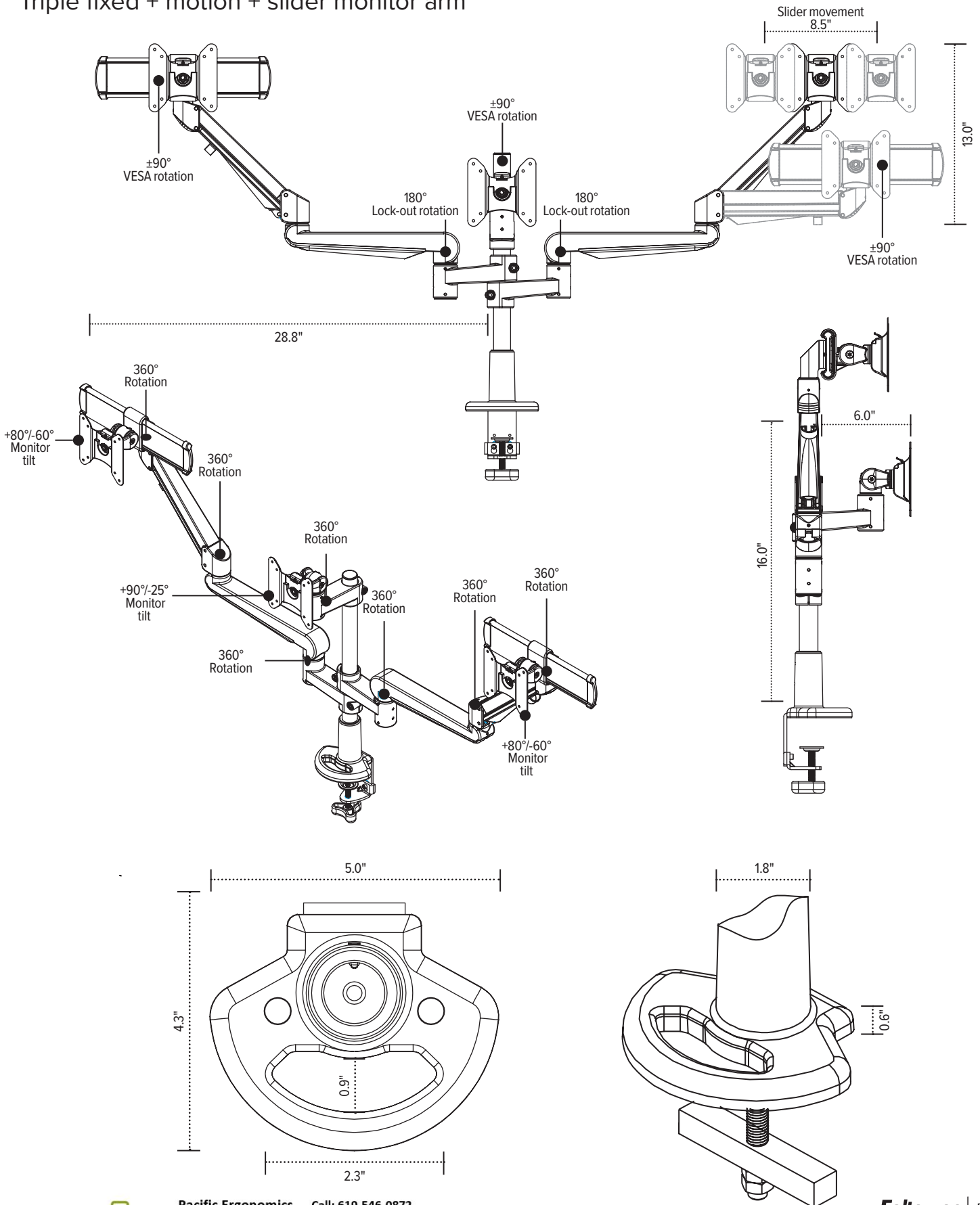
- As workstation needs change, so can the Evolve configurations. Additional components sold separately
- Benching system mount(s) available

Call our Customer Service Department for compatibility and pricing for custom configurations.

Evolve3-FMS



Triple fixed + motion + slider monitor arm



Pacific Ergonomics - Call: 619-546-0872
 customerservice@pacifergo.com www.pacifergo.com

Fellowes FAMILY BUSINESS
 SINCE 1917

© 2020 Fellowes, Inc. V33 catalog prices. All prices are in U.S. dollars.