

SITMATIC®

High Performance Ergonomics



BETA²

Super Beta



Beta, versatility and value in professional quality ergonomic seating.

BETA²

Super Beta², extended seat, Advanced Synchron control with independent back angle adjustment, adjustable seat depth, black aluminum base, inflatable air lumbar bolster, height, width and angle adjustable arms.

073 SY AL +1A



Super Beta, Sync control, sliding seat, nylon base, adjustable height & width arms
073 SN NB +7K



Super Beta, SyncErgo control, sliding seat, height, width & angle adjustable arms with wide memory foam caps in matching upholstery
073 SE UA +1M



*Medium high back,
standard seat, Sync
control, adjustable
seat depth, nylon
base, height and width
adjustable arms.*

063 SN NB +7K



*Medium high back,
Sync control, sliding
seat, extended width
seat, nylon base,
height, width & angle
adjustable arms*

063 SN ES NB +1A



*Medium high back,
SyncErgo control,
sliding seat, polished
aluminum base,
height, width & angle
adjustable arms with
wide memory foam
caps in matching
upholstery*

063 SE AB UA +1M



Mesh back, extended seat, Advanced Synchron control, height adjustable footring, polished aluminum base, height, width and angle adjustable arms.

068 SY ES +6K



Mesh back, Sync control, sliding seat, nylon base, adjustable height & width arms
068 SN NB +7K



Mesh back, Sync control, sliding seat, tall stool height, height adjustable standing, extended aluminum base
068 SN TC SR XA



*Tall stool, mid back,
standard seat,
DualTouch control,
height adjustable
standing, height,
width and angle
adjustable arms.*

064 DT SR +1N



*Medium stool, mid
back, standard
seat, DualTouch
control, height
adjustable footring,
height adjustable,
retractable arms*

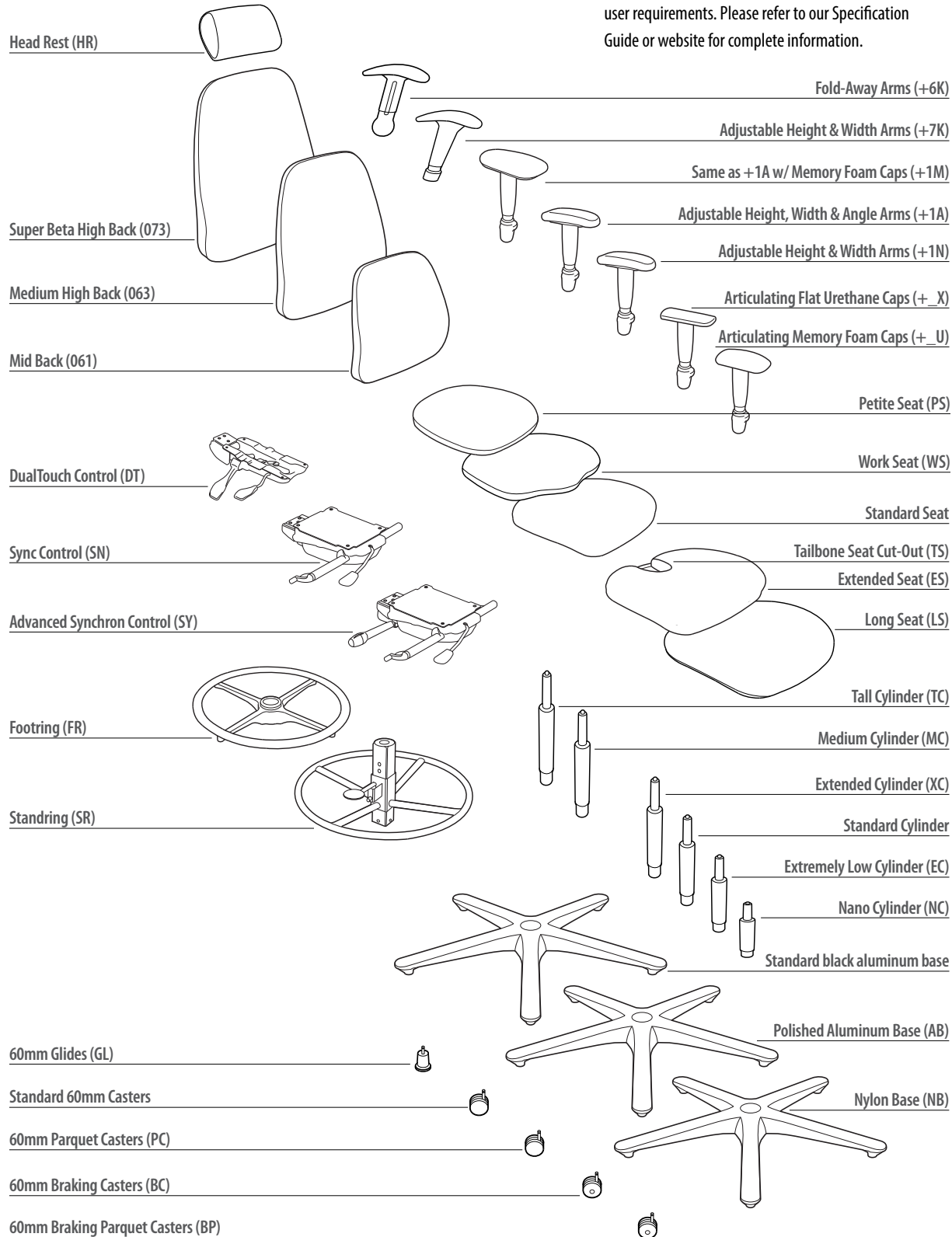
065 DT +6K



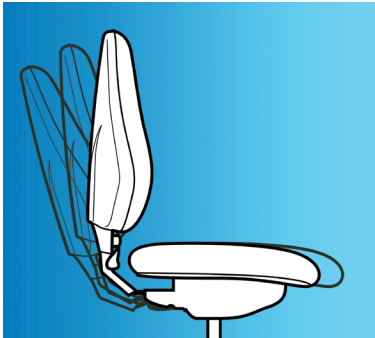
*Tall stool, standard
seat, DualTouch
control, height
adjustable stand
ring, armless*

064 DT SR

Beta² Seating, with it's many designs, sizes and functional options, may be custom specified for precise user requirements. Please refer to our Specification Guide or website for complete information.

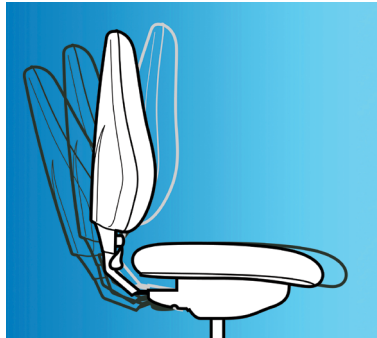


Chair Controls



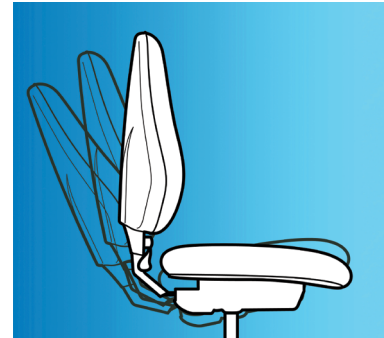
Sync™ Control (SN)

Synchronized free-float rocking, lockable in any position, integrated seat depth adjustment and side-actuated tension adjustable for user weight.



Advanced Synchron Control (SY)

Synchronized free-float rocking, lockable in any position, integrated seat depth adjustment, side-actuated tension adjustment and independent back angle adjustment for computer work.



DualTouch™ Control (DT)

Independent adjustment of the seat and backrest angles in two intuitive levers. A great choice for dedicated task work.

Unique Beta² Features

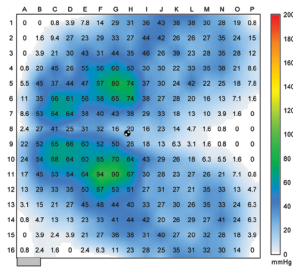


PressureCast™ Foam

Seating comfort is determined by how well the weight of the user is distributed over the seating surface. Uneven distribution causes pressure points that quickly become painful. The result is constant fidgeting by the user to relieve the pressure and loss of circulation.

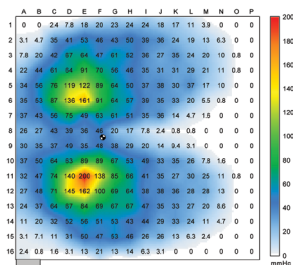
Compare the pressure maps to the right. Sitmatic's Pressure-Cast™ foam distributes the user's weight evenly. The typical gel or mesh seat produces dramatic pressure points indicated by the yellow/red hot spots.

Ergonomic contouring of the seat shape and high-resiliency PressureCast™ foam result in the most supportive and comfortable seat cushions possible.



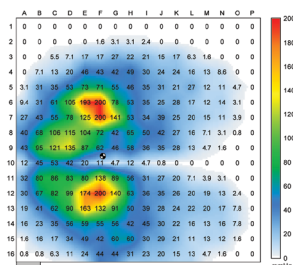
Sitmatic Pressure Cast™ Foam

Even distribution of weight over seat



Typical Gel-Foam Seat

Painful pressure points at buttocks



Typical Mesh Seat

Painful pressure points at buttocks



Lumbar Support

The scientifically engineered shape hugs and supports the back from lumbar to thorax.



Green Check Certified

Beta² chairs are independently tested to exceed Green Building Council's LEED-CI Indoor Environmental Quality Standards. IEQ 4.5 and may comply with MRS 5.0.



Intuitive QuickBack™

Allows you to move the backrest through an unprecedented 6" range in 27 positions. Fingertip control positions the lumbar support exactly where you need it.



Cast Aluminum Base

The cast aluminum base is stronger and more durable than comparable plastic bases and is easier to recycle.

Exceptional Range of Seating Solutions



Management, Executive and Conference Seating



Task and Operational Seating



Occasional and Stacking Chairs



Auditorium and Public Seating

For further information on our comprehensive range of seating please visit our website or call our toll free number. Specifications are subject to change without notice.

Sitmatic



Call Pacific Ergonomics

Phone: 619-546-0872

E-mail: customerservice@pacificergo.com

Website: www.pacificergo.com



Sitmatic seating is covered by our comprehensive lifetime structural warranty. Specifications are subject to change without notice.



Sitmatic seating has passed the stringent testing procedures established by; ANSI/ BIFMA and CAL 117.



Sitmatic literature is printed on certified recycled paper and paper from well-managed forests and controlled sources.



Green Check Certified

Our products are certified compliant for LEED-CI indoor environmental air quality. Choosing Sitmatic chairs for your work place contributes to a cleaner, safer, more sustainable environment.